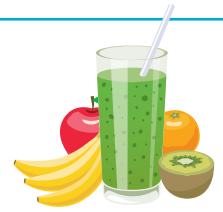


## Case

# Compact Dry × Cold-Pressed Juices



## Customers

### Sewu Sentral Primatama

Griya Idola Industrial Park Blok H No 1  
Jl. Raya Serang KM 12, Cikupa  
Tangerang, Banten 15710



## About SSP

Spearheaded by Mr. Richard Anthony, Re.juve was founded in 2014 by Indonesia's leading diversified business groups, Gunung Sewu Group, as a response to the lack of healthy, delicious, and honest beverages in the market.

Offering a myriad selection of F&B products with cold-pressed juices being their paragon, they cater to those individuals who crave to live a sustainable healthy lifestyle.



## HACCP Certified True Cold-Pressed Production Facility

In the beginning of 2020, they are proud to announce that Re.juve True Cold-Pressed production facility has been fully HACCP certified. On top of that, their products have also been officially 100% Halal Certified - a step to fully complied with the new government regulations, notwithstanding that all of their cold-Pressed juices are already naturally 'halal' as they are made from only 100% fresh fruits and vegetables, without any added ingredients.

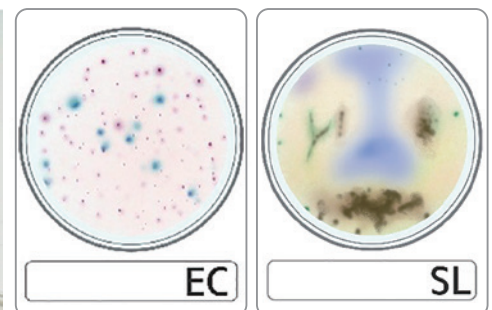
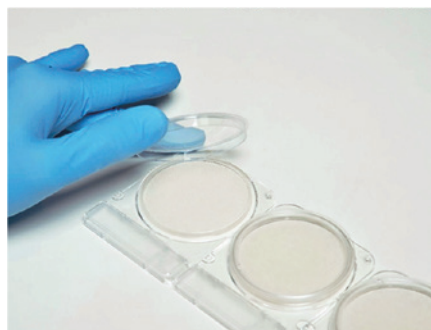
Regular QC monitoring is also conducted to avoid microbiology contamination such as total viable count, Salmonella, E.Coli, Yeast & Mould, Staphylococcus Aureus, and Listeria.



## Applications

SSP used to do the traditional microbial testing method that spent more working time and more labors.

Now, SSP is using Compact Dry for the routine microbial food safety tests. It is a ready-to-use media, and is able to be kept under room temperatures. These convenient features enable easier field test operations in the laboratory.



Coliforms/E.coli(EC)

Salmonella spp.(SL)

## Shimadzu Diagnostics Corporation

Local  
Distributor

**THERMALINDO**  
LABORATORY, INDUSTRIAL TESTING AND SCIENTIFIC

**Address:** Jl. Daan Mogot II No. 100 J, Jakarta Barat  
Indonesia 11510

**Web:** [www.thermalindo.com](http://www.thermalindo.com)